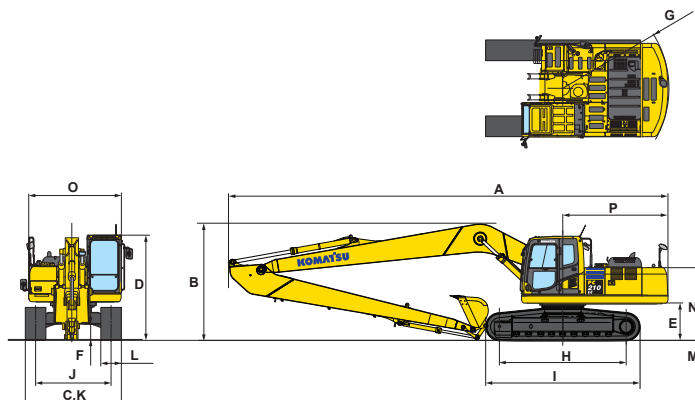




DIMENSIONS AND OPERATING WEIGHT (APPROXIMATE)

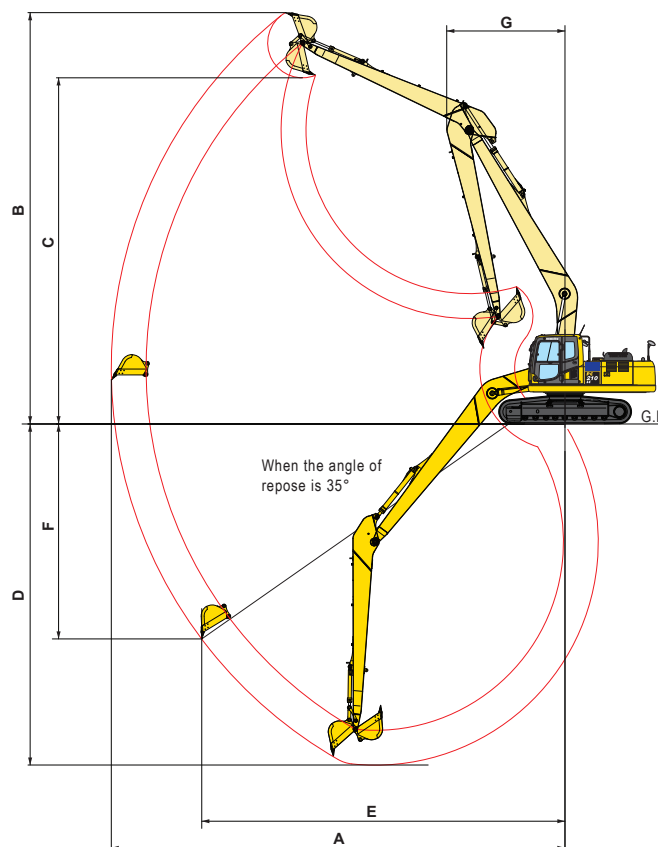
| Model | PC210LC-10M0 | |
|--------------------------------------|--------------|----------|
| Reach Spec. | 15m | 18m |
| Boom Length | 8620 mm | 10340 mm |
| Arm Length | 6360 mm | 8200 mm |
| A Overall length | 12620 mm | 14455 mm |
| B Overall height (To top of boom) | 3090 mm | 3195 mm |
| C Overall width | 3180 mm | 3180 mm |
| D Overall height (To top of cab) | 3045 mm | 3045 mm |
| E Ground clearance, counterweight | 1085 mm | 1085 mm |
| F Ground clearance (Minimum) | 440 mm | 440 mm |
| G Tail swing radius | 3050 mm | 3050 mm |
| H Track length on ground | 3655 mm | 3655 mm |
| I Track length | 4450 mm | 4450 mm |
| J Track gauge | 2380 mm | 2380 mm |
| K Width of crawler | 3180 mm | 3180 mm |
| L Shoe width | 800 mm | 800 mm |
| M Grouser height | 26 mm | 26 mm |
| N Machine cab height | 2095 mm | 2095 mm |
| O Machine cab width | 2710 mm | 2710 mm |
| P Distance, swing center to rear end | 3015 mm | 3015 mm |

| Model | PC210LC-10M0 | |
|-------------------------------------|-------------------------------------|-------------------------------------|
| Reach Spec. | 15m | 18m |
| Operating Weight | 24000 kg | 26600 kg |
| Ground Pressure (Shoe Width 800 mm) | 40.2 kPa 0.41 kg/cm ² | 44.6 kPa 0.45 kg/cm ² |
| Bucket Capacity (Standard) | 0.45 m ³ | 0.29 m ³ |



WORKING RANGE

| Model | PC210LC-10M0 | |
|-------------------------------------|--------------------|--------------------|
| Reach Spec. | 15m | 18m |
| A Max. digging reach | 15135 mm | 18340 mm |
| B Max. digging height | 13435 mm | 15400 mm |
| C Max. dumping height | 11250 mm | 13240 mm |
| D Max. digging depth | 11535 mm | 14605 mm |
| E Digging reach at 35° repose angle | 12100 mm | 14730 mm |
| F Digging depth at 35° repose angle | 7190 mm | 9030 mm |
| G Minimum swing radius | 4040 mm | 4970 mm |
| Bucket digging force | 44.7 kN 4560 kg | 42.4 kN 4325 kg |
| Arm crowd force | 75.8 kN 7730 kg | 48.3 kN 4925 kg |



Printed in Thailand 202001

KOMATSU®

ZE2SP210SLF-01

Materials and specifications are subject to change without notice.
KOMATSU is a trademark of Komatsu Ltd. Japan.

PC210LC-10M0 SUPER LONG FRONT

KOMATSU®

PC210LC-10M0

SUPER LONG FRONT

PC210

HYDRAULIC EXCAVATOR



Super Long Front

Super long front attachment boasts a huge digging reach. An excavator with this attachment highly improves working efficiency in various works such as river conservation, lake dredging, slope finishing and materials carrying where an extensively long reach is required. Boom and arm are newly designed and enhanced longer life.

HORSEPOWER

Gross: 123 kW 165 HP/2000 min⁻¹
Net: 123 kW 165 HP/2000 min⁻¹

OPERATING WEIGHT

PC210LC-10M0:
SLF 15 m: 24000 kg
SLF 18 m: 26600 kg

BUCKET CAPACITY

SLF 15 m: 0.45 - 0.55 m³
SLF 18 m: 0.29 - 0.36 m³